



BIGBEN

PRODUCT DATA SHEET 01.24



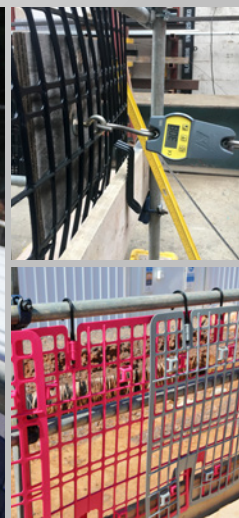
6 4 7 6 | **PREMIUM SUREGARD BRICK GUARD**

DEFINING FEATURES

- Manufactured from highly durable polypropylene
- Built and tested to withstand winds of up to 78mph
- 2x replaceable swivel hooks

CONFORMITY:

Tested and approved to EN12811-1:2003



BIGBEN

bigbensafety.com

TAKING SAFETY TO NEW HEIGHTS



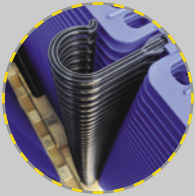
ADDITIONAL FEATURES



- 1 **2x flexi-tough replaceable hooks** to secure guard to scaffold tube.



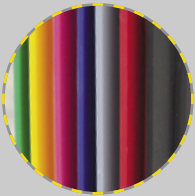
- 2 **2x serrated toe board clips** to provide maximum grip and security.



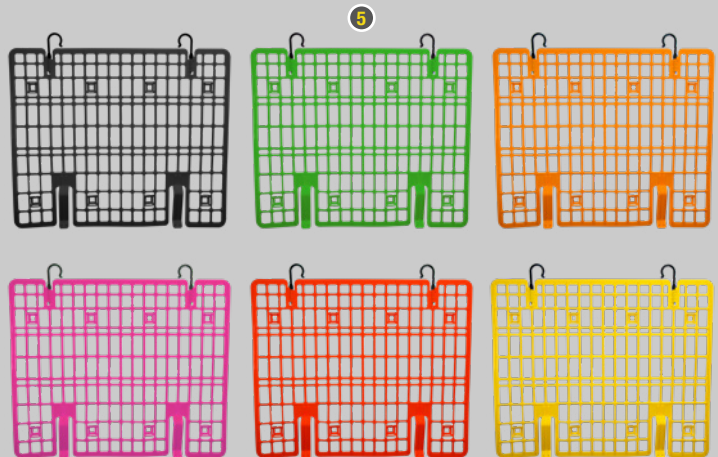
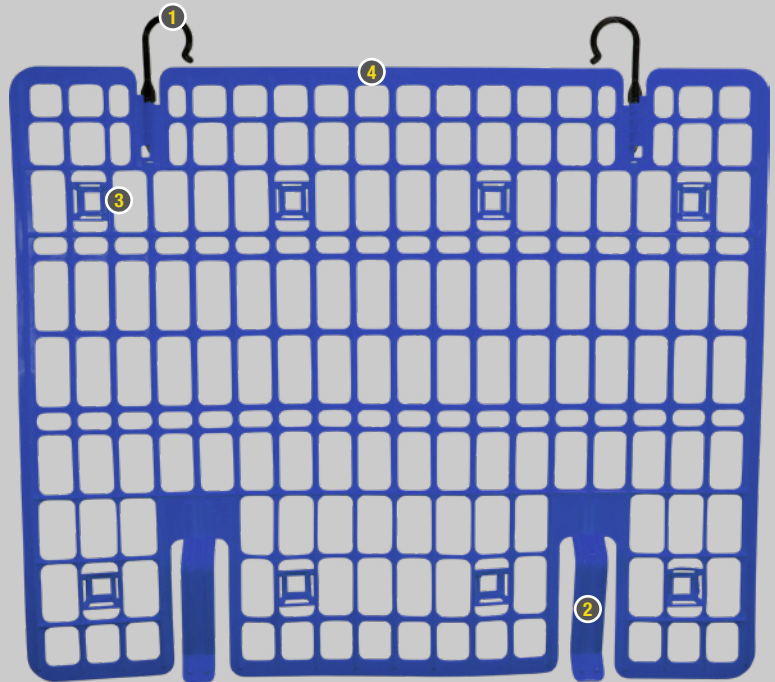
- 3 **Stacking guides** to ensure safe stacking.



- 4 **Manufactured from highly durable polypropylene** to maintain strength and longevity.



- 5 **7 colours to choose from**

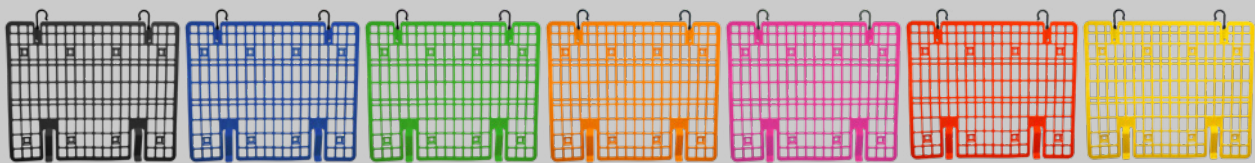


OFTEN PURCHASED WITH:

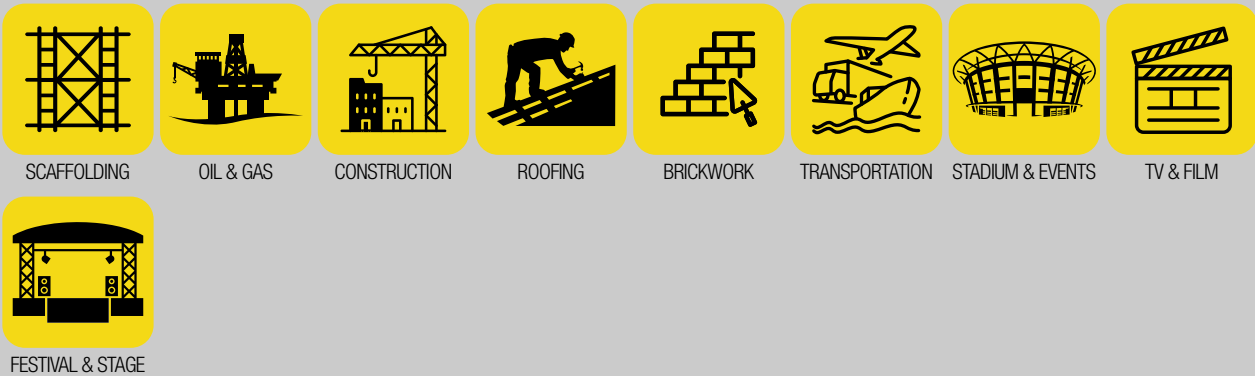


ORDERING INFORMATION

PART NO	COLOUR	DIMENSIONS (EXCLUDING HOOKS)	UNIT WEIGHT	WIND RESISTANCE SPEED
AC-6476BK	Black	1025mm (W) x 850mm (H)	1.44kg	78mph
AC-6476BL	Blue			
AC-6476G	Green			
AC-6476OR	Orange			
AC-6476PK	Pink			
AC-6476RD	Red			
AC-6476YW	Yellow			



SUITABLE INDUSTRIES




TAKING SAFETY TO NEW HEIGHTS



DISTRIBUTED BY:

LEACH'S
Beacon Park, 228 Holme Lacy Road,
Hereford HR2 6BQ
Tel: 01432 346800 Email: sales@leachs.com
First for Safety www.leachs.com



 **Swiss Logo**
The Marque of Excellence